

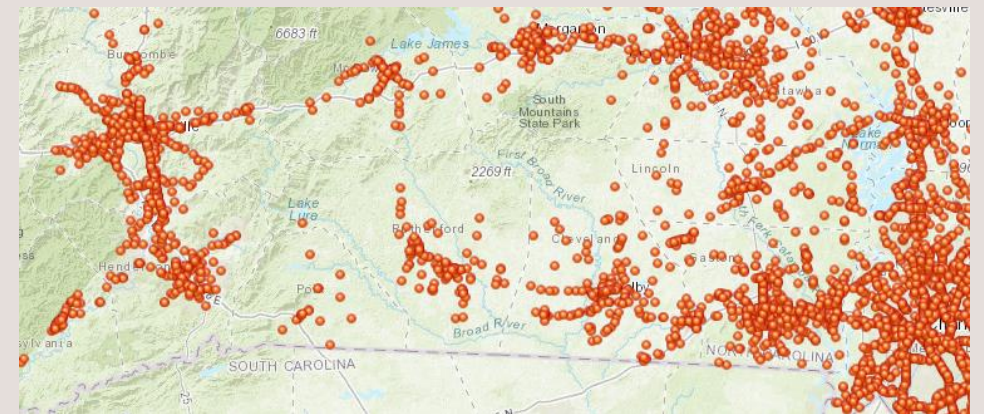
GIS/DATA UPDATE

January 2018

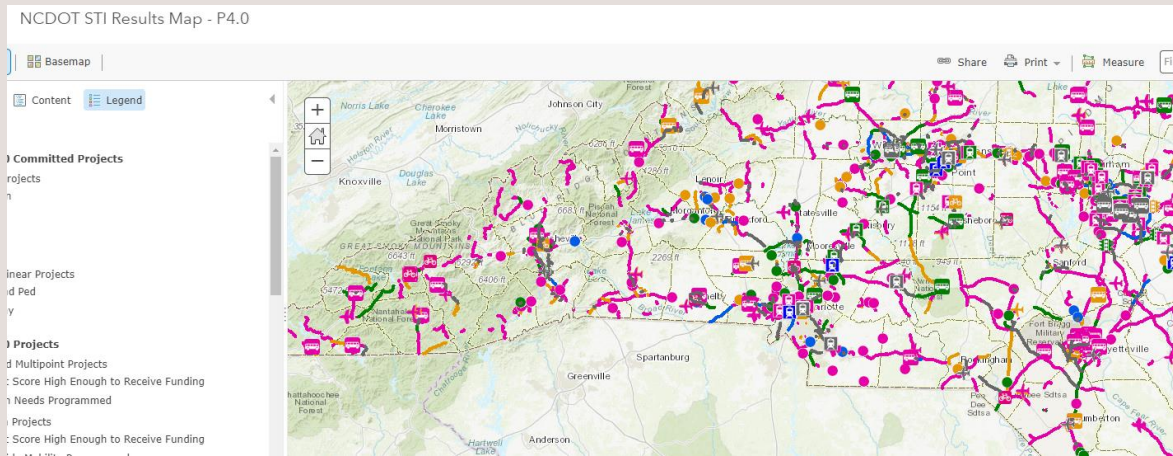
Karyl Fuller, IRPO & Allen Serkin, CFRPO

DATA

- Check out NCDOT ArcGIS Online:
- <https://ncdot.maps.arcgis.com/home/gallery.html#c=organization&o=modified>
- A lot more data
 - Not all of it looks ready for primetime but there is some interesting layers
 - Title VI
 - Traffic Forecasting
 - Lots of layers on fatal crashes—types, locations



DATA



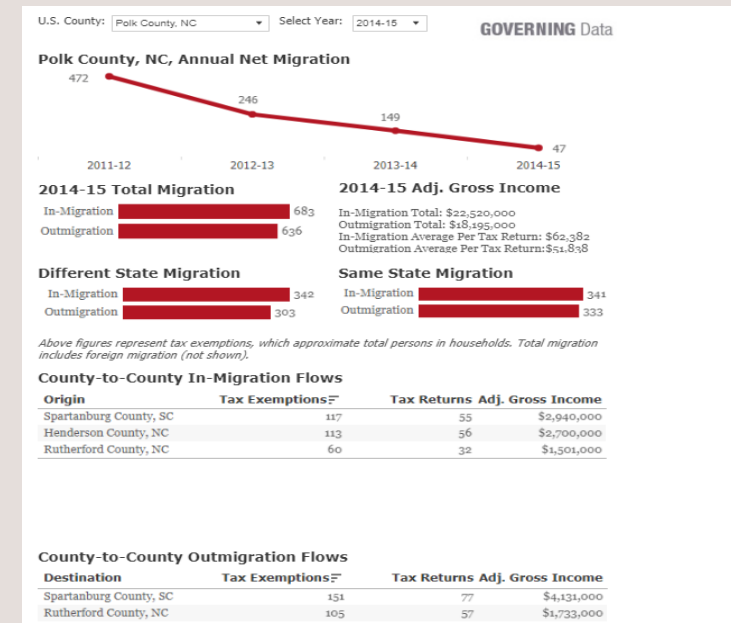
- NCDOT has a webmap here:
<http://www.arcgis.com/home/webmap/viewer.html?webmap=2b885d0f163b4c34a831c65010fd5703>
- P 4.0 Data available here:
<https://ncarpo.box.com/s/dtt98she932oxjcb0fy5z8lr1v3j23ah>

DATA/WEBSITES

- Federal and State ArcGIS data server
- https://mappingsupport.com/p/surf_gis/list-federal-GIS-servers.pdf
- 150+ state ArcGIS servers
https://mappingsupport.com/p/surf_gis/list-state-GIS-servers.pdf

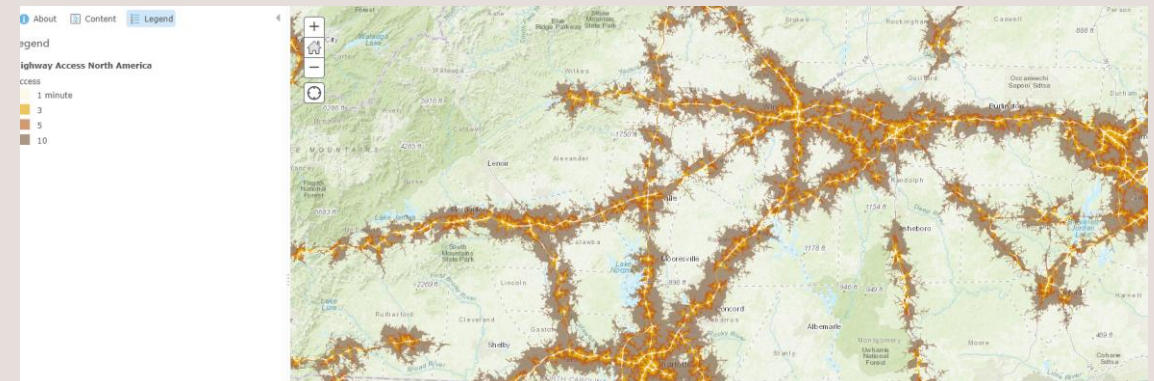
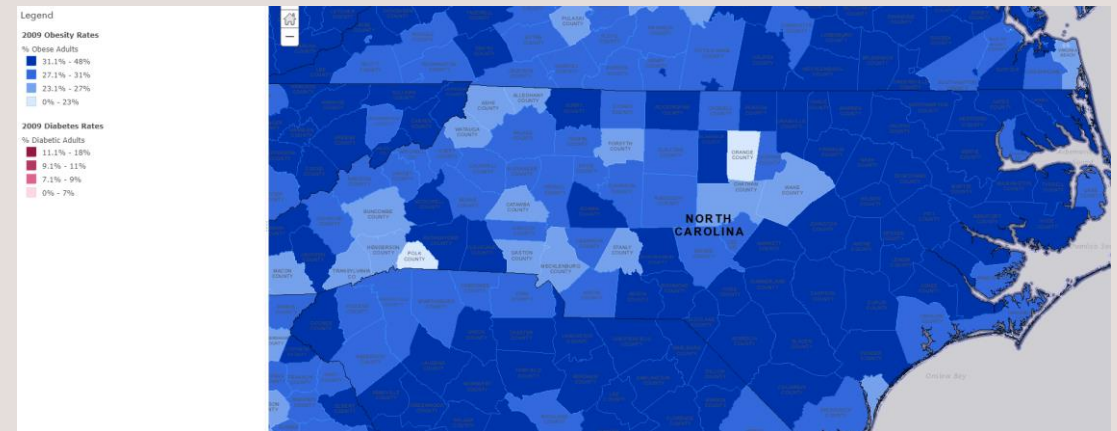
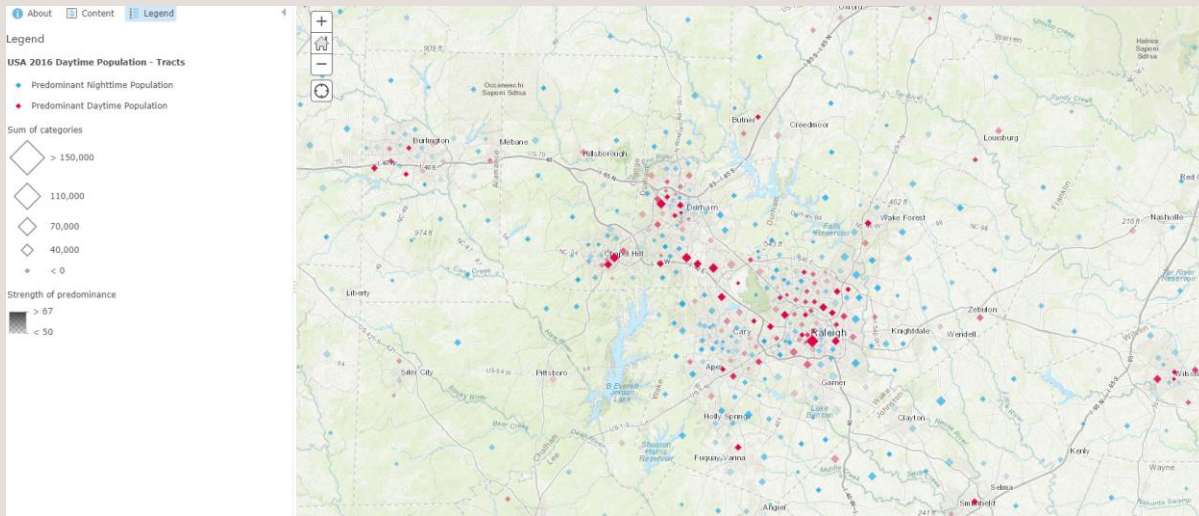
- Work in Progress.

- County Migration Data from IRS Tax Returns
- <http://www.governing.com/gov-data/census/county-migration-flows-tax-returns-data.html>



WEBSITES

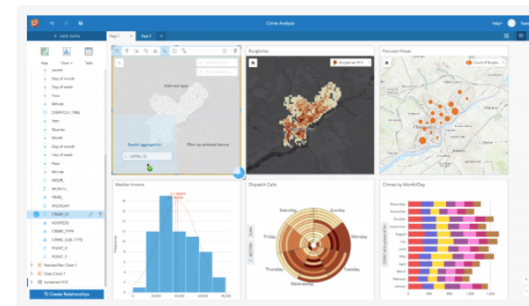
- Living Atlas-ESRI
- www.livingatlas.arcgis.com



INSIGHTS FOR ARCGIS

- Insights are being integrated across ESRI platform
- In ArcGIS Pro, Community Analyst and ArcGIS Online

Insights for ArcGIS



To celebrate the one-year anniversary of Insights for ArcGIS, Esri made it available through ArcGIS Online. Insights for ArcGIS, a web-based data analytics workbench, allows you to explore spatial and nonspatial data so you can uncover questions and quickly deliver powerful results. Here are the top five takeaways for the January 2018 release:

- **Analyze based on your selection:** Apply a cross filter by selecting a location on a map card. See all linked cards update, showing values related only to the selected location.
- **Understand statistical significance:** Try the new Calculate Z-score tool. Z-scores are useful for understanding the number of standard deviations each data value is from the mean.
- **Visualize large datasets:** Binned maps are now available as a new map type and can be used for displaying and making sense of large or clustered datasets.
- **Chart many variables:** Bar and column charts created with two string fields can now be visualized as stacked charts. Plus, switch between grouped and stacked charts.
- **Take Insights for a test drive:** New users can get a [free trial to ArcGIS Online and Insights for ArcGIS](#). ArcGIS Online users can sign up for a free trial in the [ArcGIS Marketplace](#).

See a complete list of everything [new in Insights for ArcGIS](#).

ARCGIS PRO TRAINING RESOURCES

- Tips and Shortcuts- <http://arcg.is/2isT8OK>
- Quick-start Tutorials- <http://pro.arcgis.com/en/pro-app/get-started/pro-quickstart-tutorials.htm>
- E-Learning from ESRI (free...): <https://www.esri.com/training/catalog/>
- ITRE GIS Classes-(2018 schedule not yet available)
<https://itre.ncsu.edu/training/geographic-information-systems/>
- Books-
 - Learning ArcGIS Pro-- <http://amzn.to/2yl73pL>
 - Getting to Know ArcGIS Pro-- <http://amzn.to/2yKREVV>

CONFERENCE

- [Esri Southeast User Conference](#)—Public Sector
 - May 2-4, 2018- Charlotte Conference Center
 - \$199 by 2/2/2018 or \$149 if you stay in one of preferred hotels
 - Last time I attended, it was ~\$500.
 - Very focused on ESRI but will include a ton of technical sessions