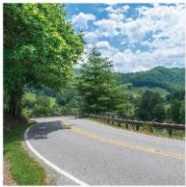




# NORTH CAROLINA

Department of Transportation



# COVID-19 Travel Trends in NC

Kerry Morrow

July 22, 2020

# Tracking Trends

- Two types of statistics are being tracked to characterize the changes in travel:
  - Volume Trends – % Change between Pre COVID-19 volume and current volume
  - Travel Trends – Change in vehicle miles traveled (VMT) between 2020 Forecasted VMT and 2020 Actual VMT estimates
- Calculations are made by day of week due to the normal variation in daily travel occurring in a week
- Change is calculated for each continuous count station (CCS)
- Daily statewide volume change is based on the average CCS change
- Volume trend is based on the early March 2020 Pre COVID volumes
- Travel trend is based on 2019 volumes for the same month
- 2020 Actual VMT is estimated by applying the average daily % change to the 2019 daily VMT estimate

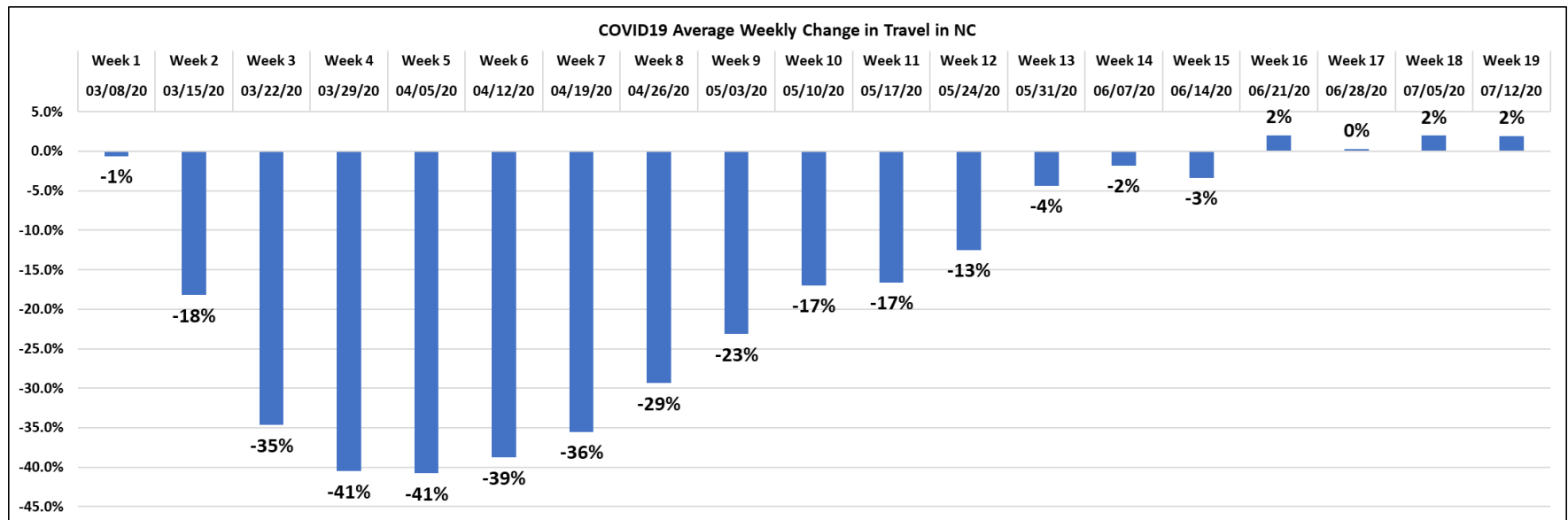
# Key Dates

The following dates for actions taken by the state to mitigate the impacts of the COVID-19 virus are key to the changes in travel:

- March 10<sup>th</sup> – Emergency Declaration (Week 2)
- March 14<sup>th</sup> – Close public schools (Week 2)
- March 17<sup>th</sup> – Close bars and prohibits dining in restaurants (Week 3)
- March 30<sup>th</sup> – Stay at Home order implemented (Week 4)
- May 8<sup>th</sup> – Phase I reopening initiated (Week 10)
- May 22<sup>nd</sup> – Phase II reopening initiated (Week 12)

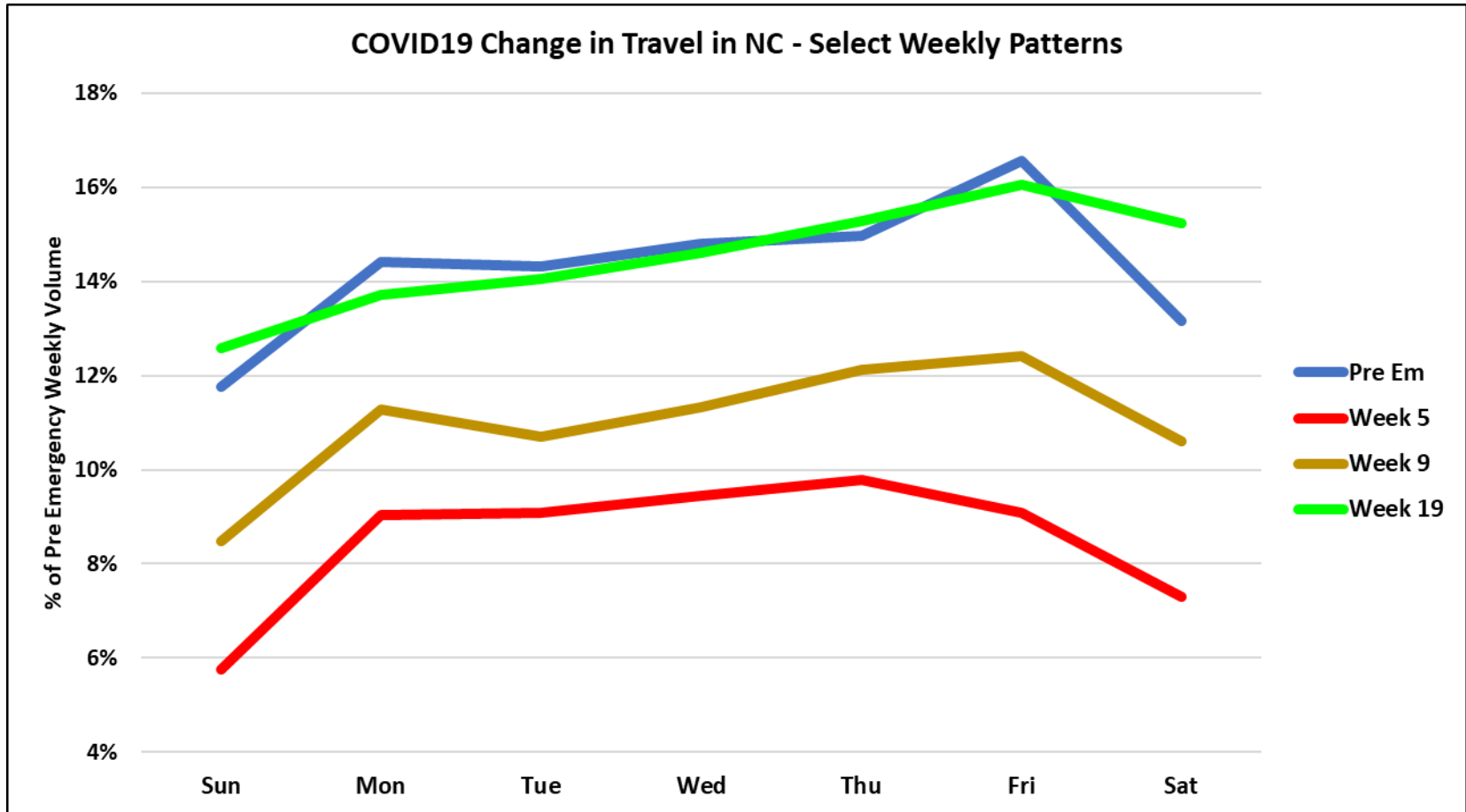
We are tracking volume trends weekly and the week indicated for each date is the first full week after the action was implemented.

# Volume Trend – Weekly Change



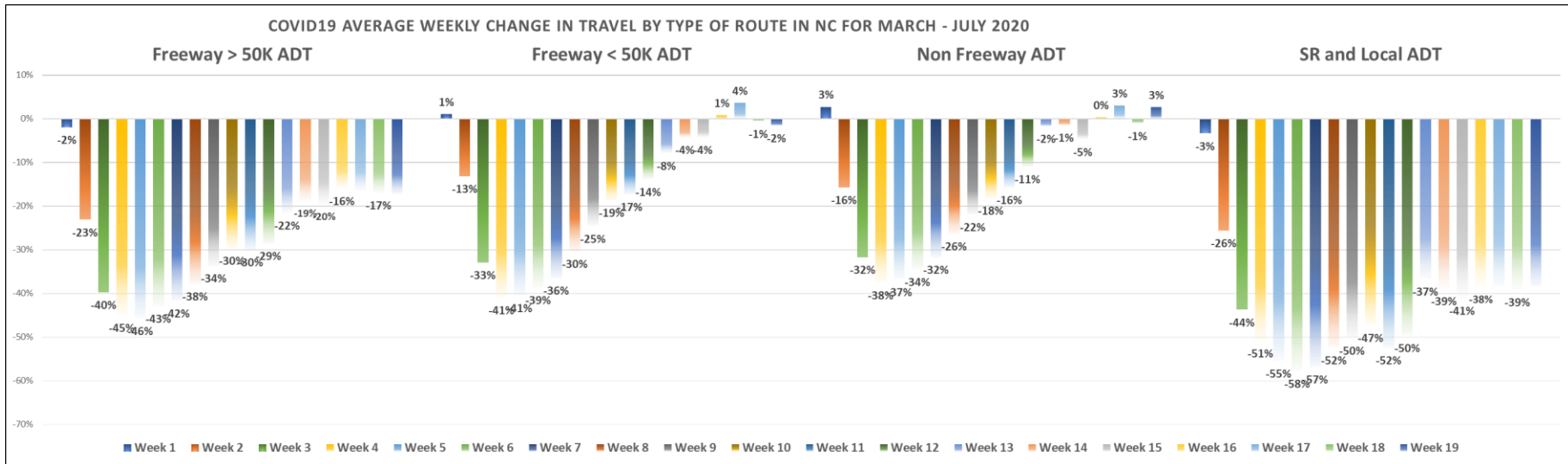
Weekly Change: Average of daily changes from Pre COVID volumes

# Volume Trend – Day of Week



Compares day of week impacts for selected weeks

# Volume Trend – Type of Route



Compares variation of impacts by the type of route

# Travel Trend – Based on VMT

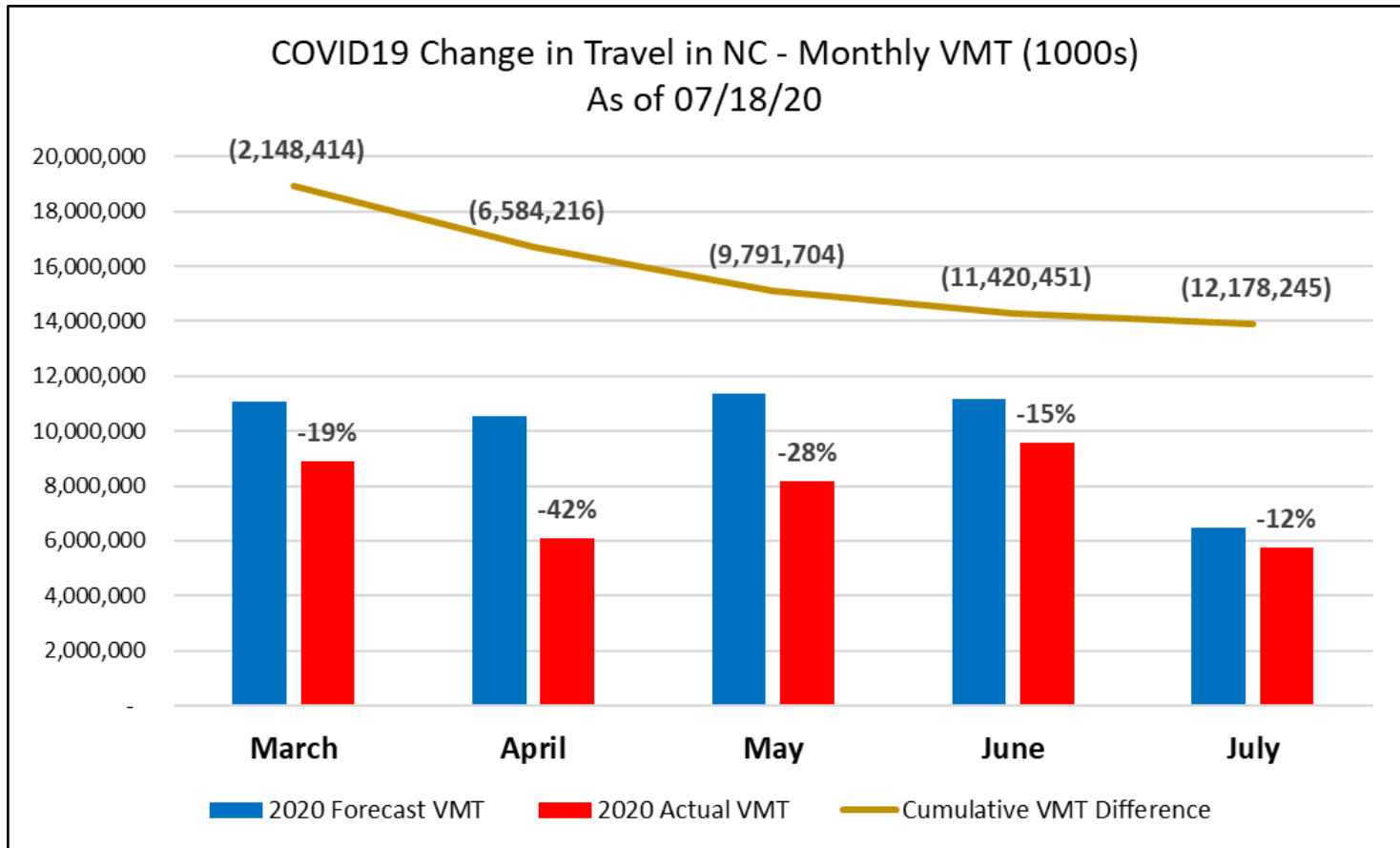
A statistic used to measure travel is Vehicle Miles Traveled (VMT). It is generated by multiplying the length of a highway segment with its volume. The VMT travel reported for 2018 are:

- US VMT was about 3.3 Trillion
- NC VMT was about 121 Billion
- Average monthly NC VMT was about 10 Billion
- VMT varies by Day of Week
- Lowest travel day in NC is typically Sunday around 300 Million
- Highest travel day in NC is typically Friday around 420 Million

Statewide Daily VMT will vary due to seasonal variation, holidays, adverse weather, and major events.



# Travel Trend – Monthly



As of July 18<sup>th</sup> we have 12 Billion less VMT than forecasted



# Travel Trend Contacts

Kerry Morrow  
Group Supervisor  
Traffic Survey Group  
[kmorrow@ncdot.gov](mailto:kmorrow@ncdot.gov)  
(919) 703-8031

Kent Taylor  
Traffic Data Resource Engineer  
Transportation Planning Division  
[ktaylor@ncdot.gov](mailto:ktaylor@ncdot.gov)  
(919) 345-9829