

GIS/Data Update

Karyl Fuller, Isothermal RPO

NCARPO--January 2017

Items

- ▶ Conferences
- ▶ Data
- ▶ Training Update-ITRE ESRI
- ▶ ArcGIS Tips
 - ▶ Georeferencing
- ▶ July and Beyond

Conferences

- ▶ NCGIS—every other year
 - ▶ February 22-24, 2017
 - ▶ Raleigh Convention Center
 - ▶ Approximately 800 GIS Users

Data--Websites

▶ Commute Data—INTERESTING Visualization--<http://bigbytes.mobyus.com/>

▶ US Commuting Statistics from the 5 Year ACS 2010 -2014

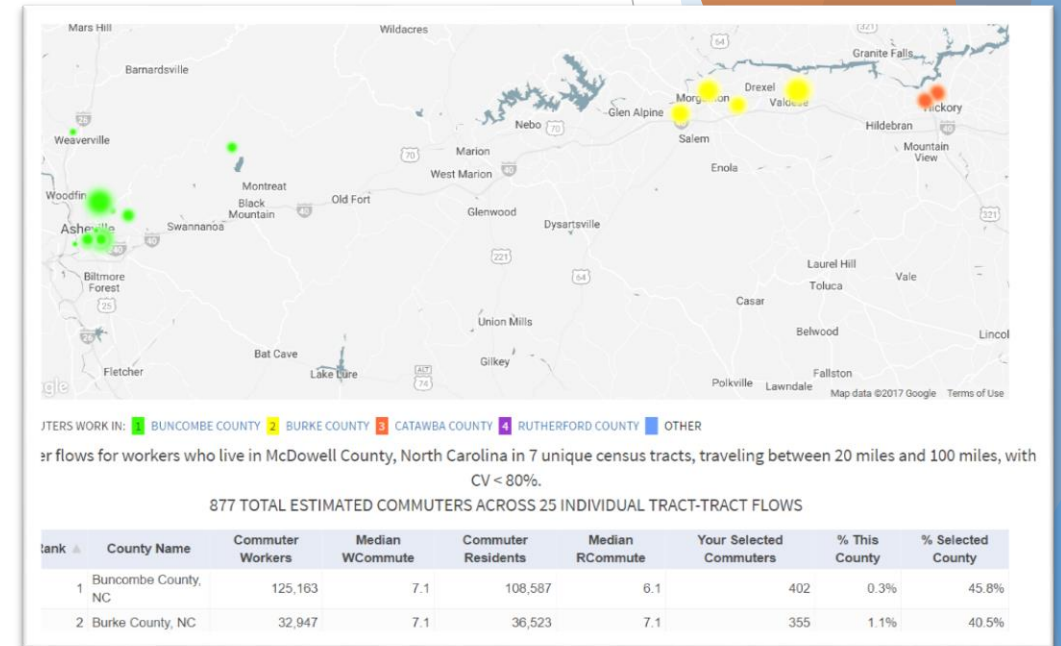
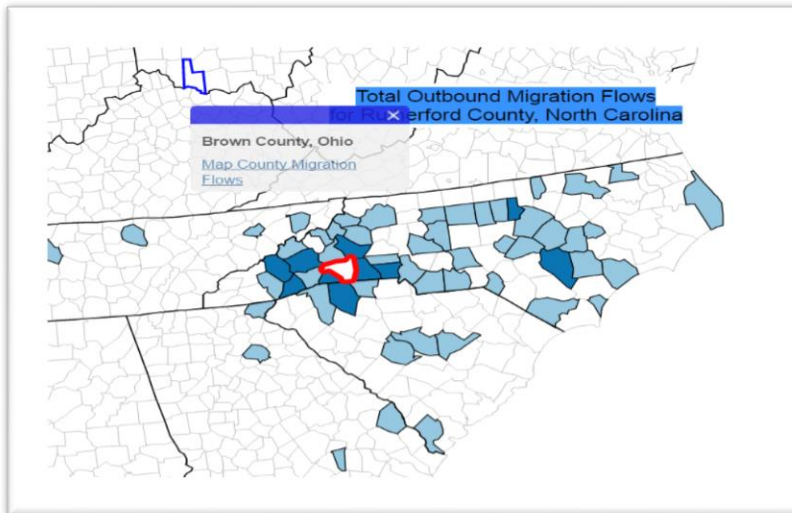
▶ <http://tabsoft.co/2kgCSf6>

▶ Commute Map

▶ <http://bigbytes.mobyus.com/commute.aspx>

▶ Migration Data

▶ <https://flowsmapper.geo.census.gov/map.html>



Data

- ▶ **Comparing 2006-2010 ACS 5-year and 2011-2015 ACS 5-year**
 - ▶ Second year that we have non-overlapping 5 year data
 - ▶ Great for County Comparisons
 - ▶ Be careful for Census tracts/Block groups—straddles the 2010 Census
 - ▶ May have changed Census tract boundaries...Block group boundaries changed even more often
 - ▶ See here for more detailed cautions-- **Comparing 2006-2010 ACS 5-year and 2011-2015 ACS 5-year**
 - ▶ <http://www.census.gov/programs-surveys/acs/guidance/comparing-acs-data/2015/5-year-comparison.html>
- ▶ Data from last time
 - ▶ Title VI maps and data: <https://ncarpo.box.com/s/1j6hqcxkdfd0yg1ujq869n1nf1x7zi8f>
 - ▶ InfoUSA 2016: <https://ncarpo.box.com/s/0yi8ggh553xzm1hcp1jnm9mbyqacsi7r>
(Remember to use both verified and pre-verified data. They are mutually exclusive.)

Training Update-ITRE

- ▶ February 2017
 - ▶ Introduction to ArcGIS I: GIS Fundamentals - Feb 20-21 - 10 Seats remain
- ▶ March 2017
 - ▶ Introduction to ArcGIS II: Editing & Analysis - March 13-15 - 8 Seats remain
 - ▶ Editing GIS Data with ArcGIS - March 16-17 - 4 Seats Remain
 - ▶ Introduction to Python for ArcGIS - March 21-22 - 9 Seats remain
 - ▶ Intermediate Python for ArcGIS - March 23 - 10 Seats remain
 - ▶ Advanced Python for ArcGIS - March 24 - 10 Seats remain
- ▶ April 2017
 - ▶ **ArcGIS Pro I: Fundamentals - April 10-11 - 10 seats remain**
 - ▶ **ArcGIS Pro II: Analysis, Automation & Sharing - April 12 - 10 Seats remain**

Go to <https://itre.ncsu.edu/training/geographic-information-systems/> for more information or to register for a class listed above.

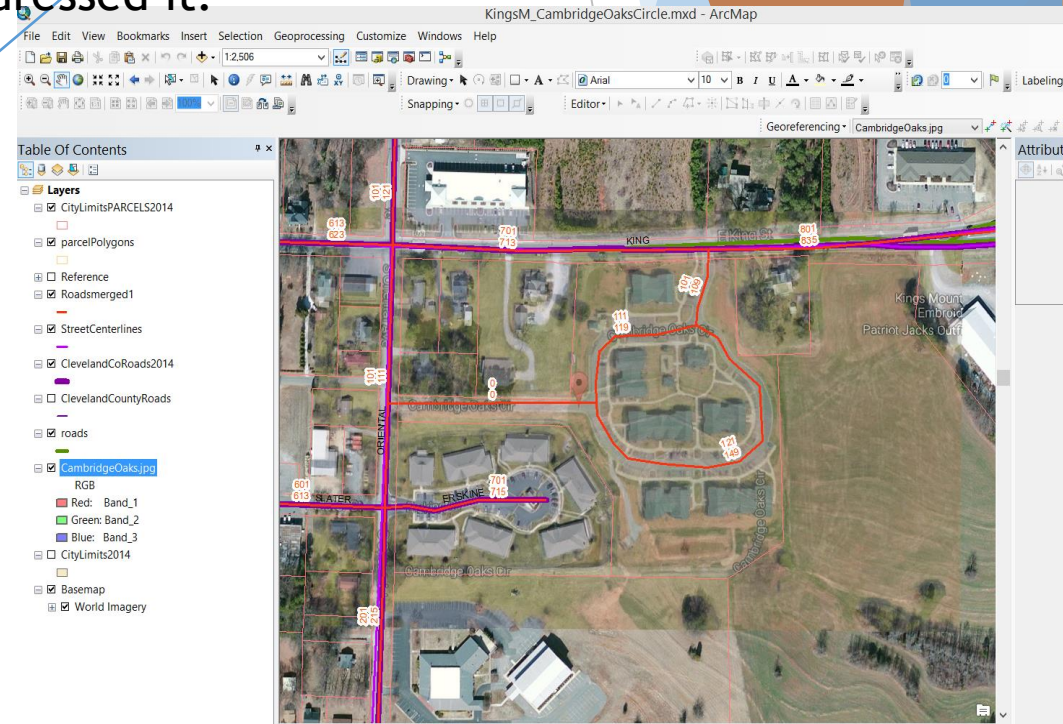
This will be the last year with a focus on classes for ArcMap and ArcCatalog. Next year most desktop classes will be focused on ArcGIS Pro since this is the new direction Esri is beginning to push desktop users. If you have not looked at ArcGIS Pro yet, we strongly encourage you to do so. ArcGIS Pro 1.4 is supposed to include all the functionality currently found in ArcMap and is due for release any day now. At that point, we expect Esri will start really pushing existing users to start transitioning. If you don't believe this, just go check out their products page on the Esri website. It starts with ArcGIS Pro as the primary desktop application. ArcMap is only mentioned as a secondary link once you are in the ArcGIS Pro product pages. ArcGIS Pro is here and will be replacing ArcMap and ArcCatalog.

ArcGIS Tips—Georeferencing Toolbar



Image to the left was clipped from Google. I used it to add a new street in Kings Mountain but I first needed to use the georeferencing toolbar to get into the correct location.

It took 5 minutes. You zoom to both layers and then use this tool to go from image to the same spot on the map and the image snapped into place after doing this 3-4 times. I then traced the road and addressed it.



July Meeting and Beyond

- ▶ Dive further into ArcGIS Pro—maybe 30 minutes session—Any interest?
- ▶ More on ACS data
- ▶ Infographics Options
 - ▶ Tableau
 - ▶ ArcGIS Pro
 - ▶ Others?

