

GIS/Data Update

Karyl Fuller, Isothermal RPO

Items

- ▶ Conferences
- ▶ Community Analyst Update
- ▶ Data
- ▶ ESRI
 - ▶ Training Update
 - ▶ ArcGIS Pro
- ▶ ArcGIS Tips
 - ▶ Labeling
- ▶ PLS GIS update

Conferences

- ▶ NCGIS
 - ▶ February 22-24, 2017
 - ▶ Raleigh Convention Center
 - ▶ Approximately 800 GIS Users

Community Analyst Training

- ▶ October 14, 2016
 - ▶ Highlight: Custom Reports
 - ▶ Limits: 10 pages or 100”
 - ▶ Can be saved and re-used
 - ▶ Still costs 10 credits/report

Esri Community Analyst

Home Maps Reports

My Content Run Reports Comparison Reports Build Reports

Select Reports Select Variables

1 Browse and select one or more variables.

2 Drag selected variables to the right.

3 Create report template.

Preview Sample Values Edit Insert item

Page Options...

Page Header

Section Options... esri Polk County Economic Zone Report

[SiteName]	[Subtitle]
[Header1]	[Latitude]
[Header2]	[Longitude]

Data

2016 Key Demographic Indicators (Esri)

Section Options...

Table Properties...

Split Table

2016 Total Population (Esri) [TOTPOP_CY]

Data

2016 Key Demographic Indicators (Esri)

Section Options...

Table Properties...

Split Table

2016 Household Population (Esri) [HHPOP_CY]

Drag and drop report sections or variables from the lists on the left to create a new report section.

Page Footer X Source: [Source]

Page Footer [Data]

Section Options...

[Copyright]	[ProductUri]	[PhoneNumber]	[TrialUrIText]	[Page]
-------------	--------------	---------------	----------------	--------

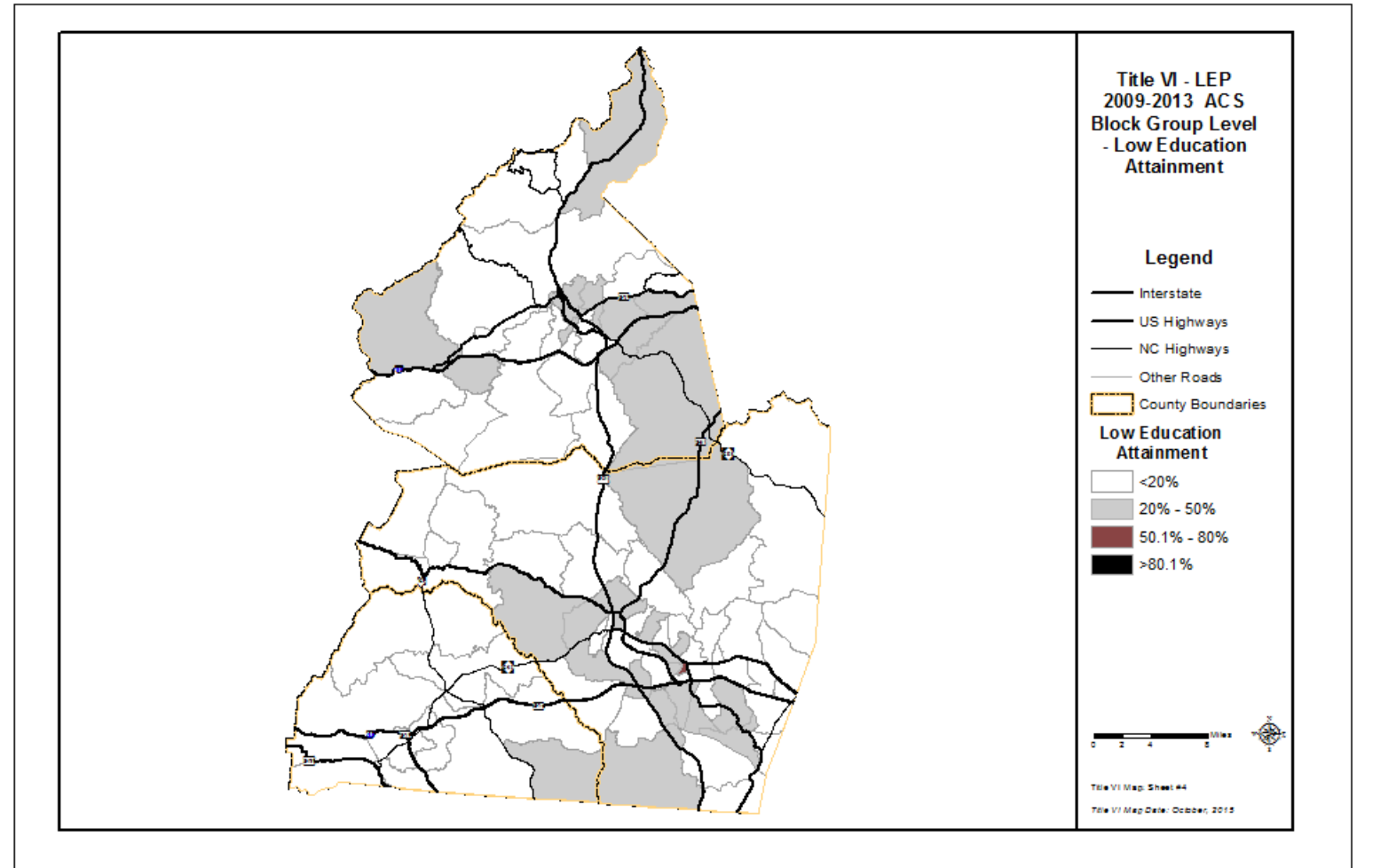
Data

- ▶ InfoUSA-2015
 - ▶ From Wongoo Lee's email:
 - ▶ Verified and Pre-verified (not yet phone-verified by InfoGroup) are available but they are mutually exclusive so you need to apply both of them together. Yet, when using the Pre-Verified data, please be careful since they are relatively less accurate than the Verified data.
 - ▶ In the database file, column named 'ACTUAL_LOC' contains employee numbers in actual employment sites. As I mentioned, you need to sum both Verified and Pre-verified data for having total employees in your study area.
 - ▶ Up on www.isothermalrpo.org/ncarpo-resources
- ▶ 2015 AADT
 - ▶ Pdfs are available now
 - ▶ Shapefile and online layer after October 28, 2016

Data

▶ Title VI Map Layers

- ▶ Over 65
- ▶ Minority
- ▶ Poverty
- ▶ Zero Car
- ▶ Hispanic & Latino
- ▶ Indian, Asian and Others
- ▶ LEP Spanish
- ▶ Low Education



ESRI—Training Update



Unlimited Access to Self-Paced E-Learning

Unlimited, organization-wide access to our large collection of self-paced e-Learning resources is now a feature of the Esri Maintenance Program. This benefit is for all customers who have an Esri qualifying product with a current maintenance subscription. Maintenance subscriptions are renewable through Esri Customer Service.

For Learners

If you purchased your own [Esri qualifying product](#), your access to e-Learning is automatic. Simply find e-Learning that meets your needs in [the catalog](#), and sign in with your Esri Account to immediately start learning.

If you are a member of an organization that has an Esri qualifying product, you need an Esri Account that is connected to your organization.

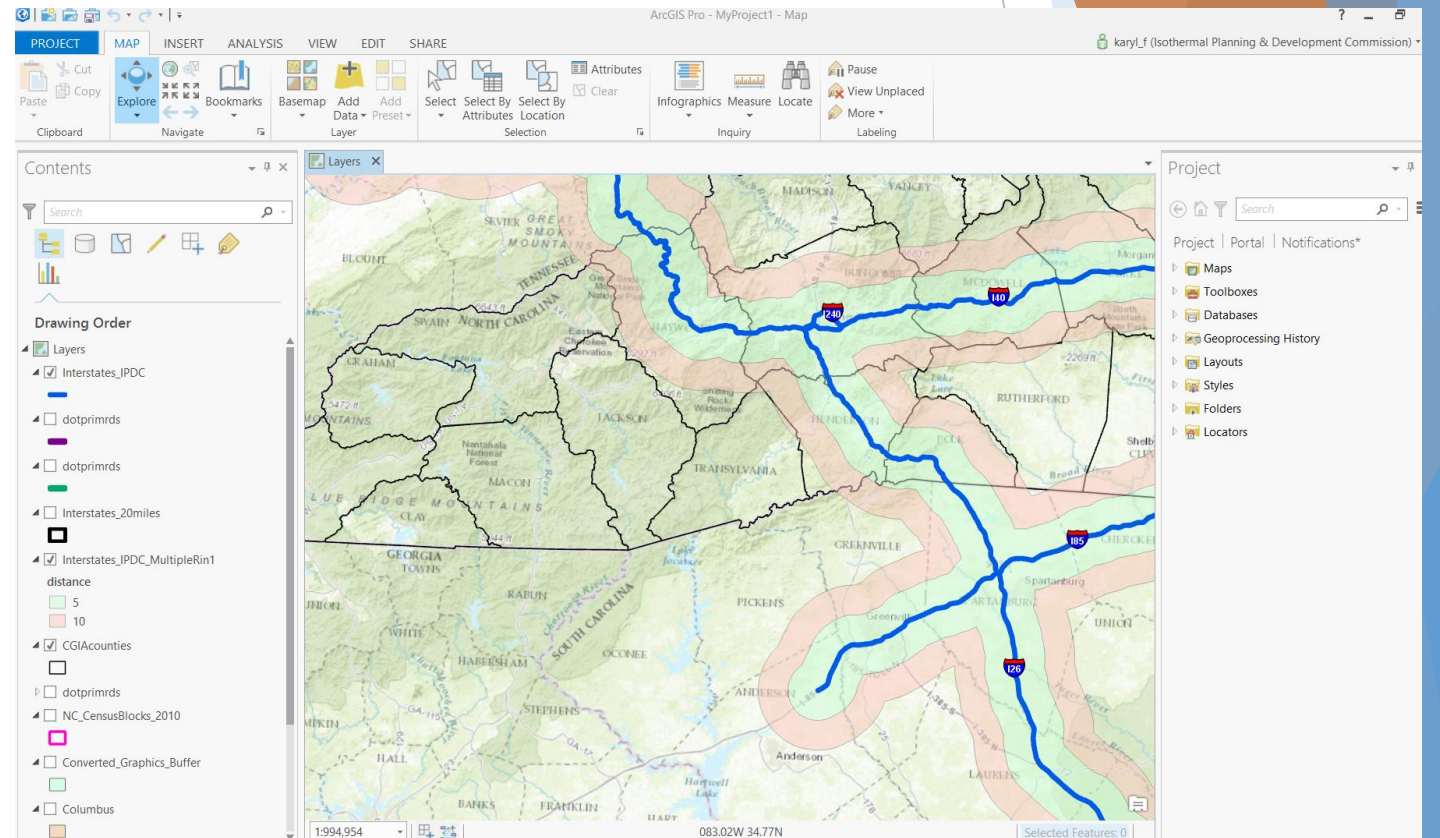
You Have Access

Your account is connected to a qualifying organization.

Training Seminar ⌚ 60 Minutes	Web Course ⌚ 3 Hours	Web Course ⌚ 60 Minutes
Get Started with Web AppBuilder for ArcGIS Non-developers can now create HTML/JavaScript-based GIS apps that run on any device with Web AppBuilder for ArcGIS. This seminar shows how to build a web app that showcases your data and incorporates ArcGIS Online GIS content.	3D Analysis of Surfaces and Features Using ArcGIS Some geographic questions can be answered only in 3D. 3D analysis tools are used to perform complex calculations and create models that consider terrain, elevation, and 3D features. In this course, you'll work	Putting Your GIS Skills to Work GIS is more than a fun tool to explore maps—it is an actual career. This course is intended to get you thinking about your future. Learn about where GIS professionals work, what they do, and how their educational choices prepare them for different types of
Wish List View Details	Wish List View Details	Wish List FREE View Details
Web Course ⌚ 3 Hours	Web Course ⌚ 2 Hours	Training Seminar ⌚ 60 Minutes
Python Scripting for Geoprocessing Workflows Increase your productivity by creating Python scripts to automate ArcGIS geoprocessing tasks. You will learn to work with ArcPy, the Esri-developed site package that integrates Python scripts into ArcGIS Desktop.	3D Visualization Using ArcGIS Pro With ArcGIS Pro, it's easy to create and share realistic 3D visualizations that engage viewers and support informed decision making. Get familiar with the ArcGIS Pro 3D environment and learn a variety of techniques to create and enhance 3D scenes.	Real-time GIS with ArcGIS GeoEvent Processor for Server ArcGIS GeoEvent Processor for Server brings live data into your organization's GIS. The presenter demonstrates how to incorporate live data into your IT infrastructure and existing GIS data. You will also learn
Wish List View Details	Wish List View Details	Wish List FREE View Details

ESRI—ArcGIS Pro

- ▶ Can be run concurrently with ArcMap
- ▶ ESRI maintenance required
- ▶ Future of ESRI's product line
- ▶ Tighter integration with ArcGIS Online



ArcGIS Tips—Labeling



Without Maplex



Labeling Toolbar:
Under Labeling,
choose <Use Maplex
Engine>



PLS GIS Update

- ▶ Last/first meeting was back on 8/2
- ▶ We had greetings/introductions, roundtable discussion of the “issues”
- ▶ Received a statement that the local government exemption still existed and was not removed
- ▶ Decided to pull together a few use cases to present to the Attorney General for clarification statements, similar to the last go-around
- ▶ Since the meeting, the group has come up with around 30 or so to consolidate into a manageable group of examples
- ▶ Next meeting is Nov 9, in Raleigh
- ▶ The group will review the cases and formulate the next steps