



GIS/DATA: JANUARY 2019

Karyl Fuller & Allen Serkin

Data Updates-AADT

- 2017 AADT data available here:
<https://connect.ncdot.gov/resources/State-Mapping/Pages/Traffic-Survey-GIS-Data.aspx>

Traffic Survey GIS Data Products & Documents
Downloadable GIS data layers

Home > Connect NCDOT > Resources > State Mapping Resources > Traffic Survey GIS Data Products & Documents

Products & Documents Archived Related Sites Disclaimer







2017 AADT Stations Document	PDF
2017 AADT Stations Shapefile	ZIP
2017 Traffic Segments Shapefile Document	PDF
2017 Traffic Segments Shapefile	ZIP
2015 Vehicle Classification Stations Document	PDF
2015 Vehicle Classification Stations Shapefile	ZIP

Data Updates-Crashes

- 2017 Crashes Data by Intersection or Section Available here:

<https://connect.ncdot.gov/resources/safety/pages/crash-data.aspx>

Crash Data Mapping Resources

✓  Name	Crash Type
▷ Crash Type : Wrong Way Drivers (86)	
▲ Crash Type : Total Crash Frequency By Intersection (3)	
▲ Crash Description : Total Crash Frequency by Intersection (3)	
 2007 – 2011 Total Crash Frequency by Intersection	... Total Crash Frequency By Intersection
 2012 – 2016 Total Crash Frequency by Intersection	... Total Crash Frequency By Intersection
 2013 – 2017 Total Crash Frequency by Intersection	... Total Crash Frequency By Intersection
▷ Crash Type : Teen (202)	
▲ Crash Type : Section Safety Scoring (2)	
▲ Crash Description : Section Safety Scores (2)	
 2012-2016 Section Safety Scores	... Section Safety Scoring
 2013 – 2017 Section Safety Scores	... Section Safety Scoring

Data Updates: NCDOT's GIS Catalog

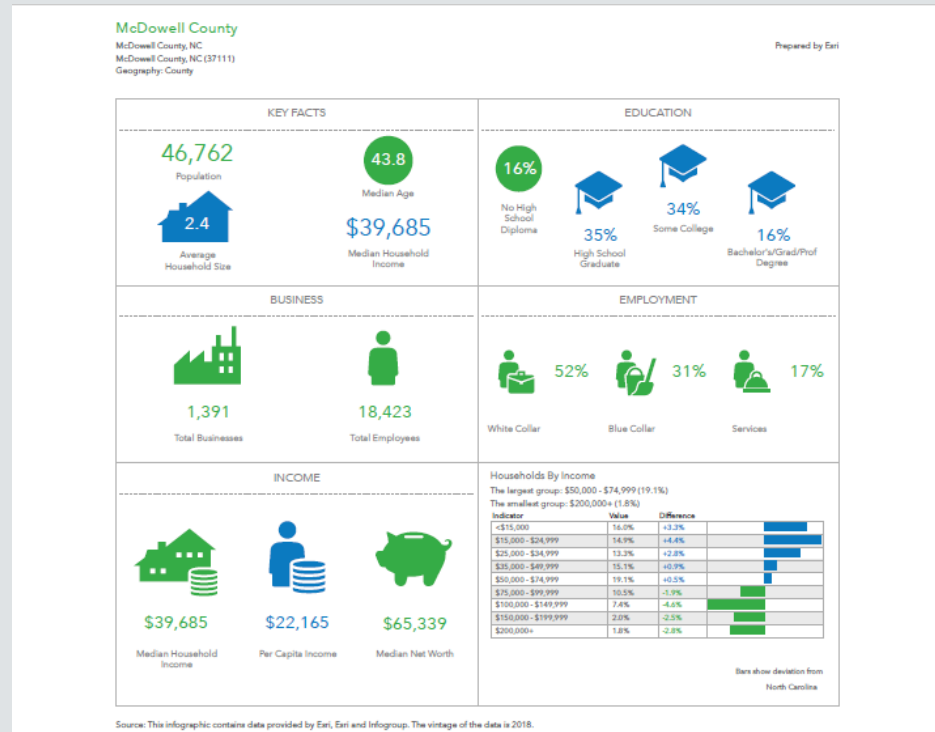
The following is a list of feature layers and services provided by NCDOT and available through GOINC as of July 13, 2018
Go to <https://ncdot.maps.arcgis.com> to access the most current information and content.

Title	Summary	Item Type	Credits
2014_HSPIP_Intersections	This feature service contains Highway Safety Improvement Program (HSIP) 2014 intersections.	Feature Service	NCDOT Tra
2014_HSPIP_Sections	This feature service contains Highway Safety Improvement Program (HSIP) 2014 sections. For more information on this program, please visit the following website: https://connect.ncdot.gov/resources/safety/Pages/NC-Highway-Safety-Program-and-Projects	Feature Service	NCDOT Tra
2015_HSPIP_Intersections	This feature service contains Highway Safety Improvement Program (HSIP) 2015 intersections.	Feature Service	NCDOT Tra
2015_HSPIP_Sections	This feature service contains Highway Safety Improvement Program (HSIP) 2015 sections.	Feature Service	NCDOT Tra
2015_VC_Stations	2015 Vehicle Class Station Locations	Feature Service	Traffic Sur
2016_SPEED_LIMIT_PROGRAM_ROUTE_LIST	Listing of SR routes identified by the Statutory Speed Program for rural roads.	Feature Service	NCDOT Tra
2016_HSPIP_Intersection	This feature service contains Highway Safety Improvement Program (HSIP) 2016 intersections.	Feature Service	NCDOT Tra
2016_HSPIP_Sections	This feature service contains Highway Safety Improvement Program (HSIP) 2016 sections.	Feature Service	NCDOT Tra
2016_Legislative_Report_FatalCrashData	This map provides an interactive version of the static maps included in the Appendix of the Department of Transportation's study for Improving Safety on Secondary Roads as required by House Bill (HB) 97, Section 29.17E.(a) and Section 29.17E.(b).	Feature Service	NCDOT Tra
2016_Legislative_Report_TotalCrashData	This map provides an interactive version of the static maps included in the Appendix of the Department of Transportation's study for Improving Safety on Secondary Roads as required by House Bill (HB) 97, Section 29.17E.(a) and Section 29.17E.(b).	Feature Service	NCDOT Tra
2017_HSPIP_Intersections	This feature service contains Highway Safety Improvement Program (HSIP) 2017 intersections.	Feature Service	NCDOT Tra
2017_HSPIP_Sections	This feature service contains Highway Safety Improvement Program (HSIP) 2017 sections.	Feature Service	NCDOT Tra
2018_STATUTORY_EXCLUDE_LIST	List of routes excluded from the 2018 Statutory Speed Program list.	Feature Service	NCDOT Tra
2018_STATUTORY_ROUTES	Listing of SR routes identified by the 2018 Statutory Speed program for rural roads.	Feature Service	NCDOT Tra
2018_HSPIP_Intersections	This feature service contains Highway Safety Improvement Program (HSIP) 2018 intersections.	Feature Service	NCDOT Tra
2018_HSPIP_Sections	This feature service contains Highway Safety Improvement Program (HSIP) 2018 sections.	Feature Service	NCDOT Tra
2018_AnimalCrashes	AnimalCrashes	Feature Service	NCDOT Tra

- Created by NCDOT
- Last updated: July 2018
- Listing of:
 - *Map Image Services*
 - *Feature Services*
 - *Web Maps*
 - *Web Apps*
 - *Data Downloads*
 - *Other*

■ Can be found here; <https://connect.ncdot.gov/resources/gis/Pages/default.aspx>. It is the upper right corner of the page.

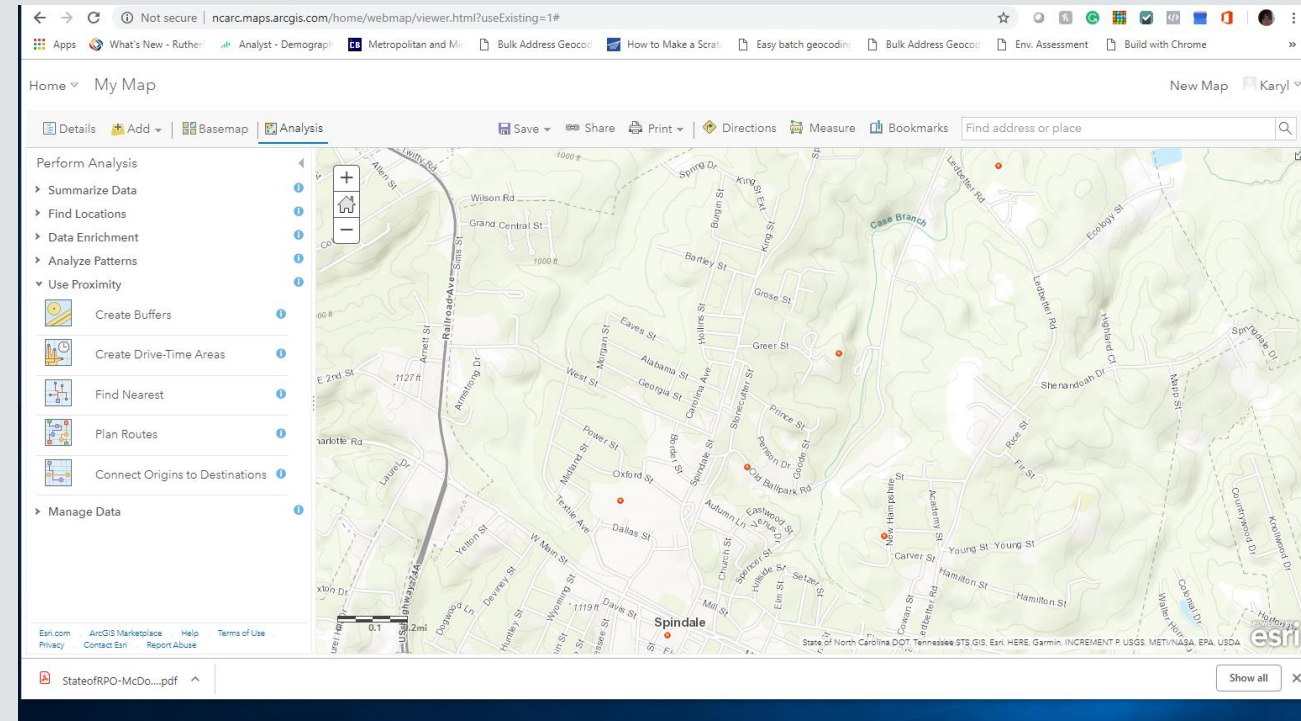
Using Community Analyst to Create Infographics



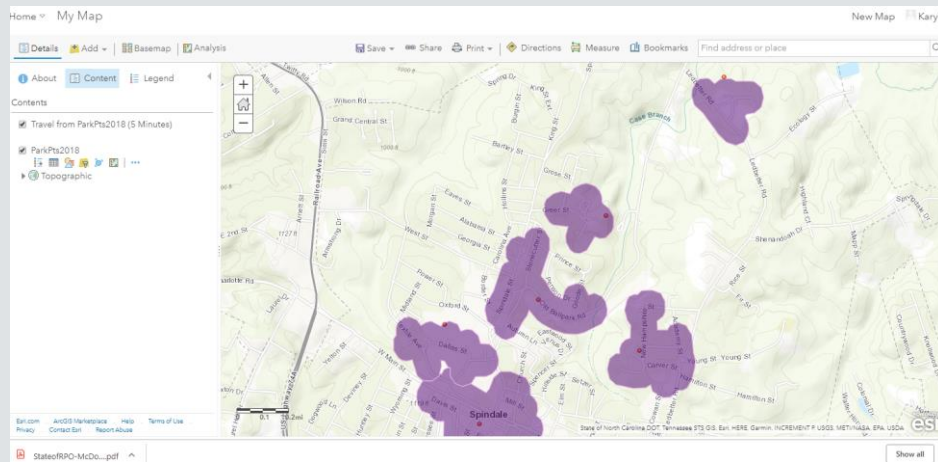
- Login into Community Analyst
- Click on Maps, then Define Areas for Reports
 - Can search or pick from the map
- Click on the map, pick infographics
- Community Analyst creates it for you. You modify and edit it to customize it.
- DEMO—
<https://communityanalyst.arcgis.com/esriCA/login/>

Using ArcGIS Online to Get Walk/Drive Analyses

- Add a point layer for parks, businesses or other locations
- Click the <Perform Analysis> tab
- Select <Use Proximity>
 - Choose <Create Drive-time areas>
 - Driving Time
 - Driving Distance
 - Rural Driving Time
 - Rural Driving Distance
 - Walking Time
 - Walking Distance
 - Others



5-minute Walking Distance Results



A screenshot of the ArcGIS Online item page for the layer "Travel_from_ParkPts2018_5_Minutes". The page has a blue header with navigation tabs: Overview, Data, Visualization, Usage, and Settings. The main content area includes:

- Edit Thumbnail:** A thumbnail image of the purple buffers, an "Add to Favorites" button, and a description: "Feature layer generated from Create Drive Times".
- Description:** "Feature layer generated from running the Create Drive Times solution."
- Layers:** A list of layers including "Travel_from_ParkPts2018_5_Minutes".
- Item Information:** A progress bar showing the item's status, with "Low" and "High" labels.

On the right side, there is a vertical menu with buttons: "Open in Map Viewer", "Open in Scene Viewer", "Open in ArcGIS Desktop", "Publish", "Create View Layer", "Export Data", "Update Data", and "Share".

GIS Conferences



- February 27-March 1, 2019
- Benton Convention Center, Winston-Salem
- More than 800 GIS professionals in one place!
- ESRI is offering free seminar
 - *The ArcGIS User Seminar*
 - Coming to Charlotte in March