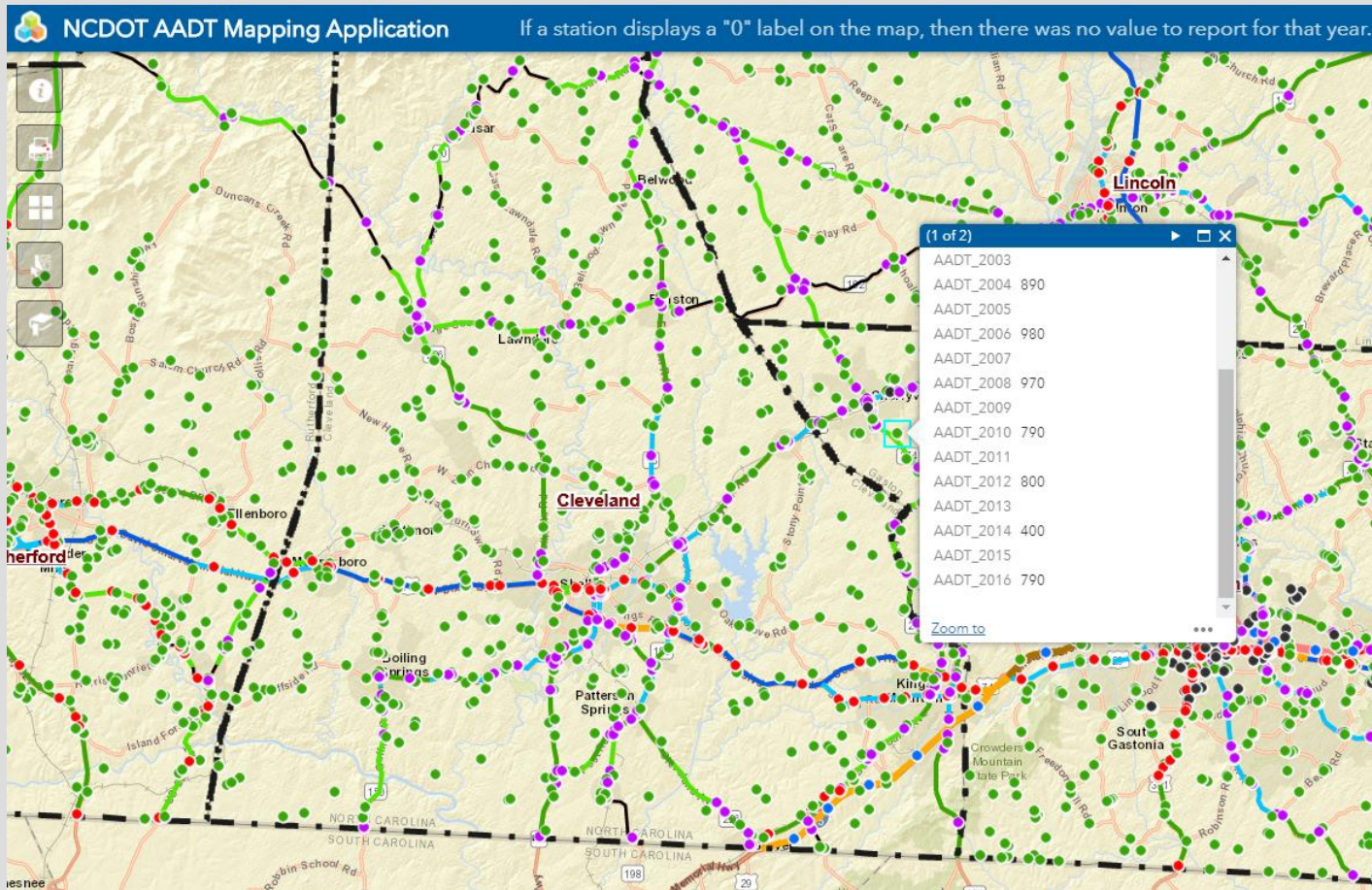


# GIS/DATA UPDATE

October 2017

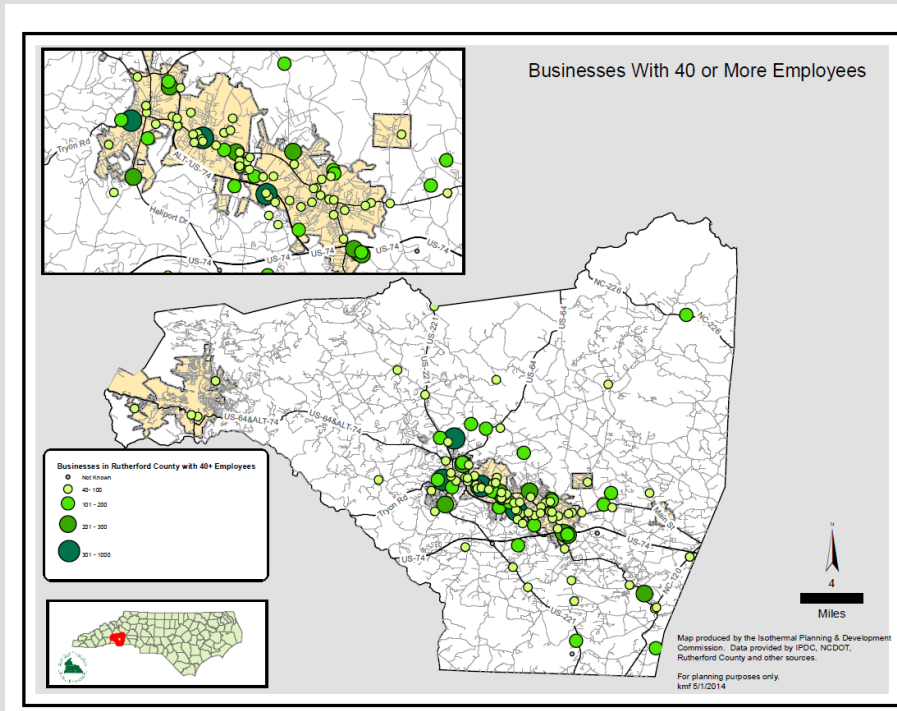
Karyl Fuller, IRPO & Allen Serkin, CFRPO

# DATA



- AADT has been updated to 2016. See here: <https://connect.ncdot.gov/resources/State-Mapping/Pages/Traffic-Volume-Maps.aspx>

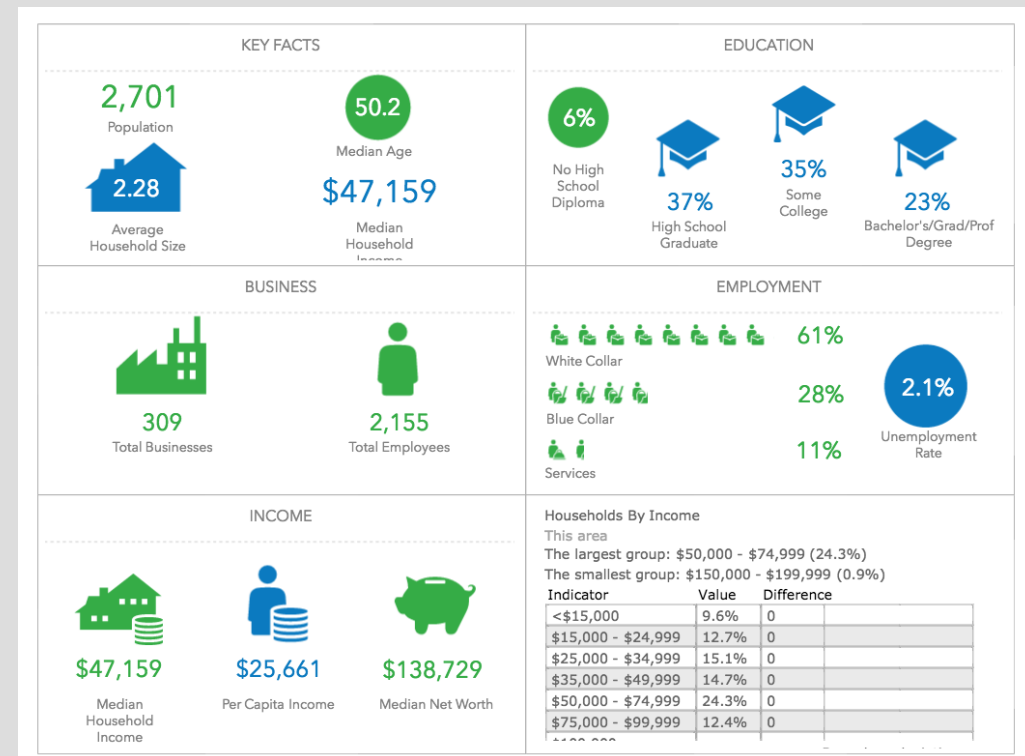
# DATA



- 2017 InfoUSA data is now available on the Box site.
- The username is [ncarpo0203@gmail.com](mailto:ncarpo0203@gmail.com)
- Contact Karyl Fuller ([kfuller@regionc.org](mailto:kfuller@regionc.org)) for the password.
- If you have trouble, please contact me and I will send you a link.

# COMMUNITY ANALYST

- Renewed for Another Year
- I am one of the two Administrators
- Some of the big changes in the last year
  - **Perform Suitability Analysis**
  - **Create Beautiful Infographics**
  - **Add and Use Your Own Data**
  - **Manage Your Work Using a Project Structure**
  - **Leverage Daytime Population Data and Global Content Updates**



# MAPINSECONDS.COM

**mapinseconds.com** turns your spreadsheet data into maps

**Step 1:** Copy your data

**Step 2:** Paste

**Step 3:** Download your map

Loading...

# ARCGIS PRO TRAINING RESOURCES

- Tips and Shortcuts- <http://arcg.is/2isT8OK>
- Quick-start Tutorials- <http://pro.arcgis.com/en/pro-app/get-started/pro-quickstart-tutorials.htm>
- E-Learning from ESRI (free...): <https://www.esri.com/training/catalog/>
- ITRE GIS Classes-(2018 schedule not yet available)  
<https://itre.ncsu.edu/training/geographic-information-systems/>
- Books-
  - Learning ArcGIS Pro-- <http://amzn.to/2yl73pL>
  - Getting to Know ArcGIS Pro-- <http://amzn.to/2yKREVV>