

Down East RPO

P3.0 Local Input Methodology

October 30, 2015

LAUREN TUTTLE



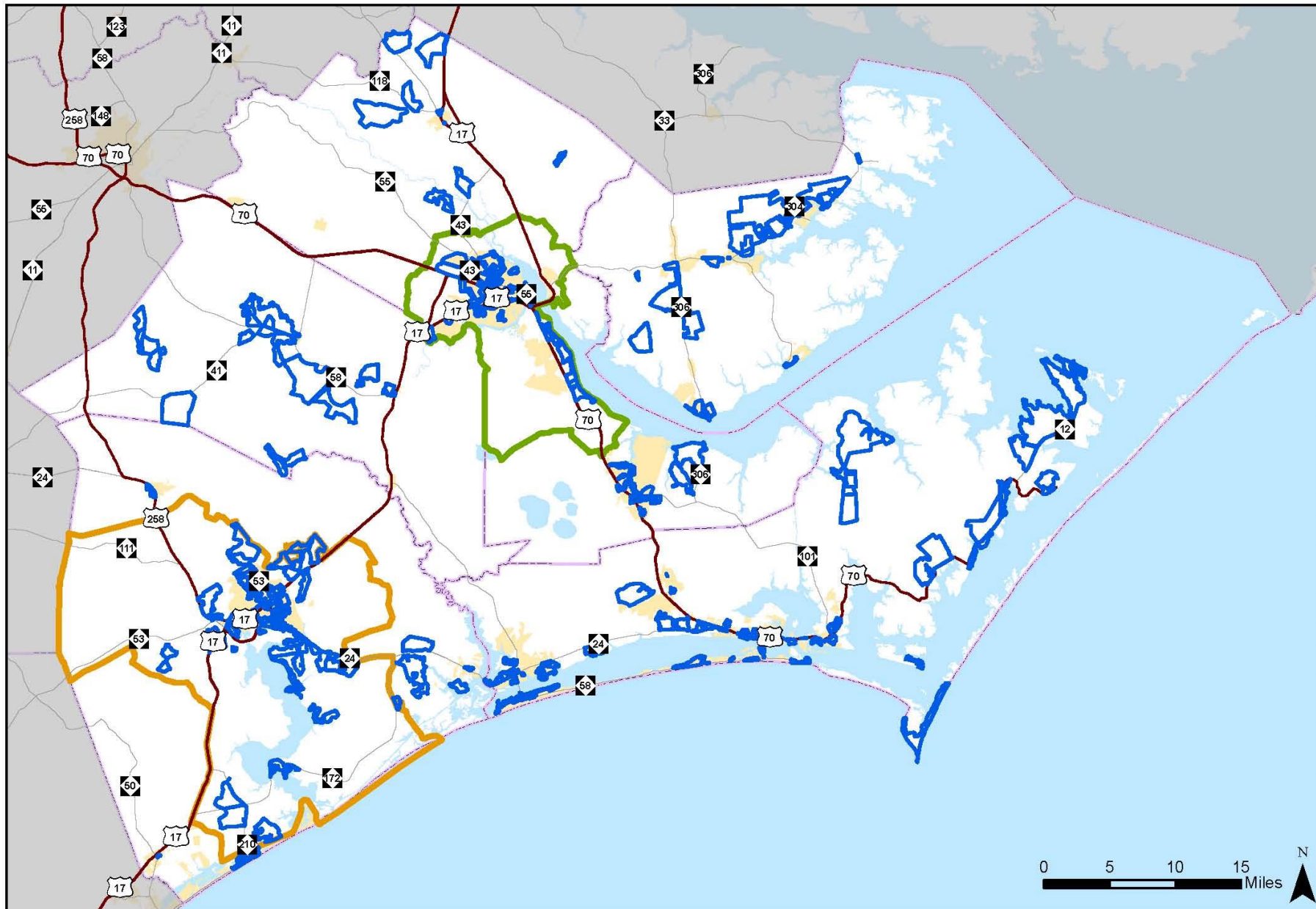
Scoring Criteria

$$\text{Quantitative Score} = \left[\left(\frac{\text{SPOT Score}}{\text{Max SPOT Score}} \right) \times 100 \right] \times 50\%$$

Qualitative Score

Based on project proximity to 6 types of assets:

- Agriculture – Top earning agricultural businesses
- Education – Community colleges, universities, off-campus centers/satellite campuses
- Health Care – General medical/surgical hospitals
- Job Centers – 2010 Census blocks with 100+ employees
- Military & Ports
- Tourism – Tourist destinations from the Croatan Regional Bicycle & Trails Plan



2010 Census Blocks with Access Points

- Down East RPO
- Jacksonville MPO
- New Bern MPO
- Municipalities
- 2010 Census Blocks
- US Routes
- NC Routes

Proximity Scoring

Projects were scored based on whether they **intersect, parallel or touch** one of the selected US Census Blocks, Block Groups, or Tracts that contain an asset.

$$\text{Census Block Score} = [(Factor\ Score + Factor\ Score \dots) \times 100\%] \times 50\%$$

$$\text{Census Block Group Score} = [(Factor\ Score + Factor\ Score \dots) \times 60\%] \times 50\%$$

$$\text{Census Tract Score} = [(Factor\ Score + Factor\ Score \dots) \times 30\%] \times 50\%$$

Discretionary Points & Local Input Points

Total Project Score = Quantitative Score + Qualitative Score

Discretionary Points

- Projects eligible for the equivalent of $\pm 40\%$ of the Total Project Score in Discretionary Points
- Used on projects of regional significance or other special consideration (e.g., high dollar projects, strong public support)

Local Input Point Assignment

- All projects sorted in descending order from highest to lowest score
- Highest scoring project gets 100 local input points, second highest scoring project gets 99 points, etc. until the DERPO point allotment exhausted